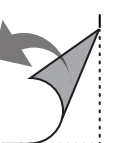
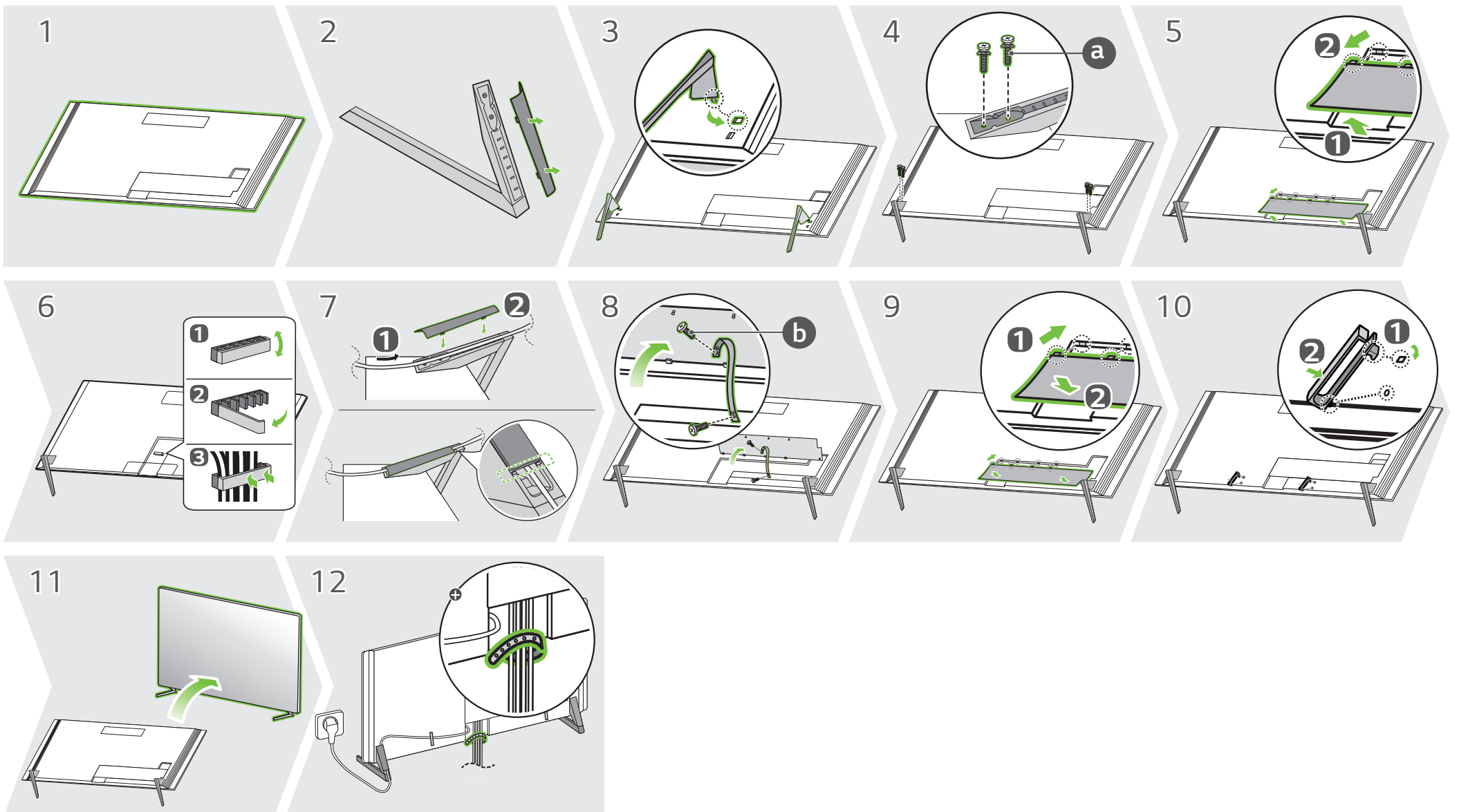
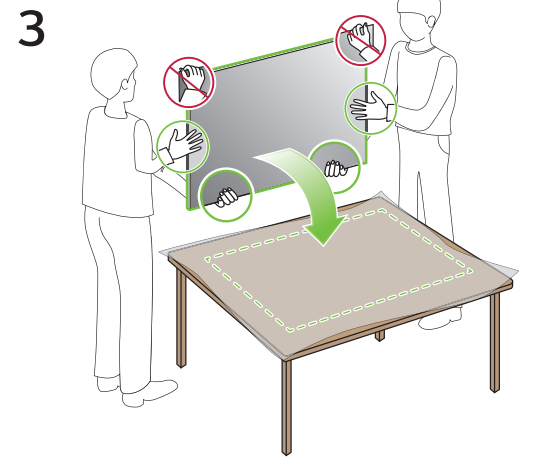
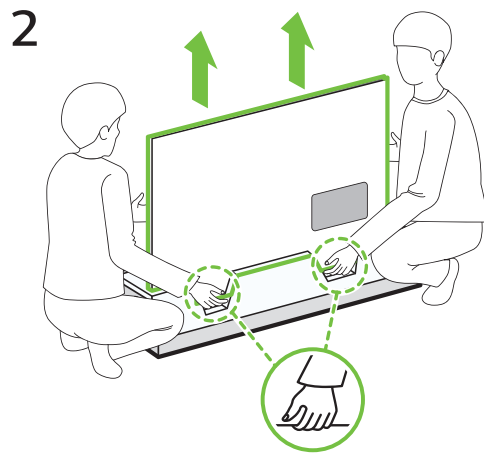
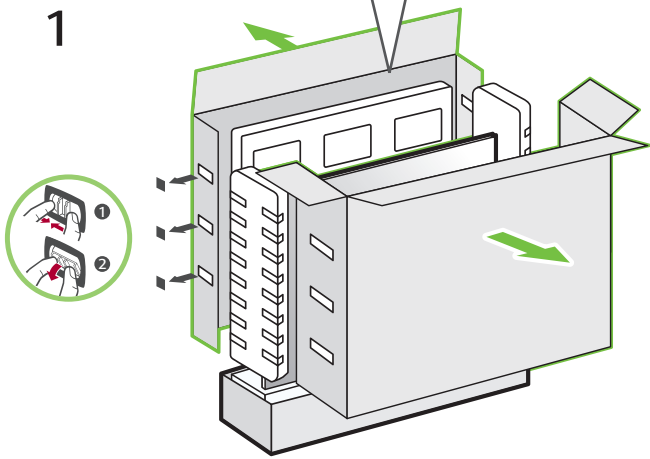
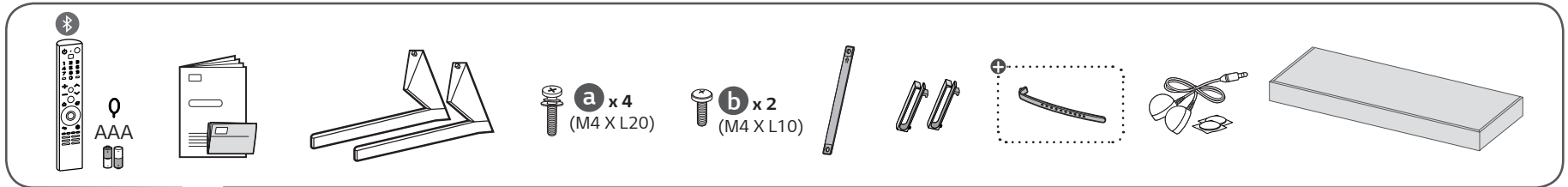
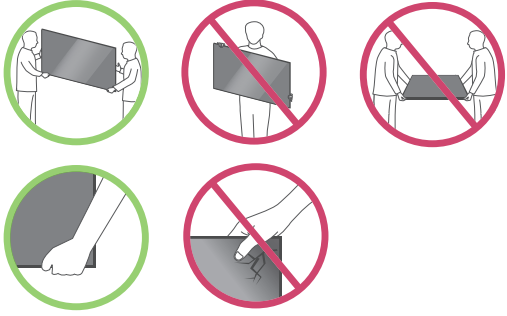
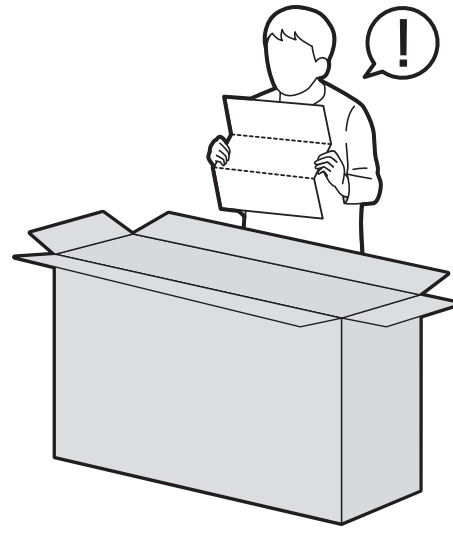
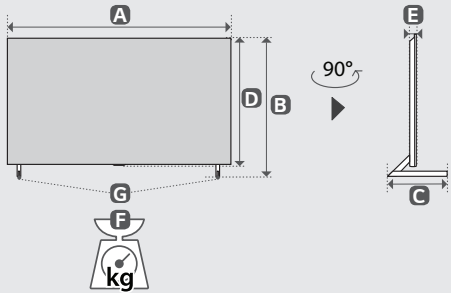
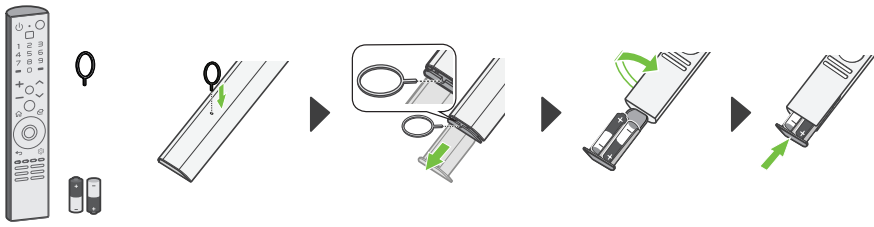
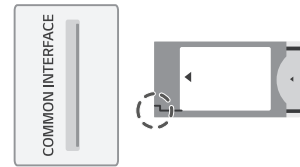
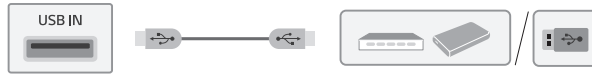
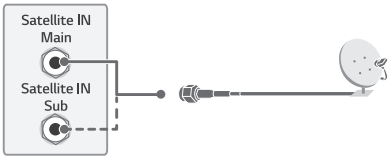


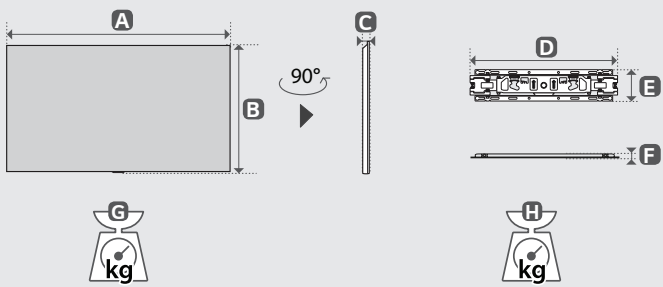


OLED77Z1\*





	A	B	C	D	E	F	F-G
	(mm)					(kg)	
OLED77Z19LA	1717	1044	323	984	32.2	43.4	42.6
Power requirement	AC 100-240 V - 50 / 60 Hz						



	A	B	C	D	E	F	G	H
	(mm)						(kg)	
OLED77Z19LA	1717	984	32.2	452	96	13.0	42.6	1.0
Power requirement	AC 100-240 V - 50 / 60 Hz							



- English** • Read **Safety and Reference**.
- Русский** • Прочтите **Руководство по технике безопасности**.
- Українська** • Прочитайте **"Правила безпеки та довідкова інформація"**.
- Қазақша** • **Қауіпсіздік нұсқаулығын оқыңыз**.
- O'zbekcha** • **Xavfsizlik bo'yicha ko'rsatmalar va havolalar'ni o'qib chiqing**.
- Монгол** • **Аюулгүй ажиллагааны зааварчилгааг уншина уу**.

⊕ : Depending on model / В зависимости от модели / Залежно від моделі / Үлгіге байланысты / Rusumiga qarab / Загвараас хамаарна